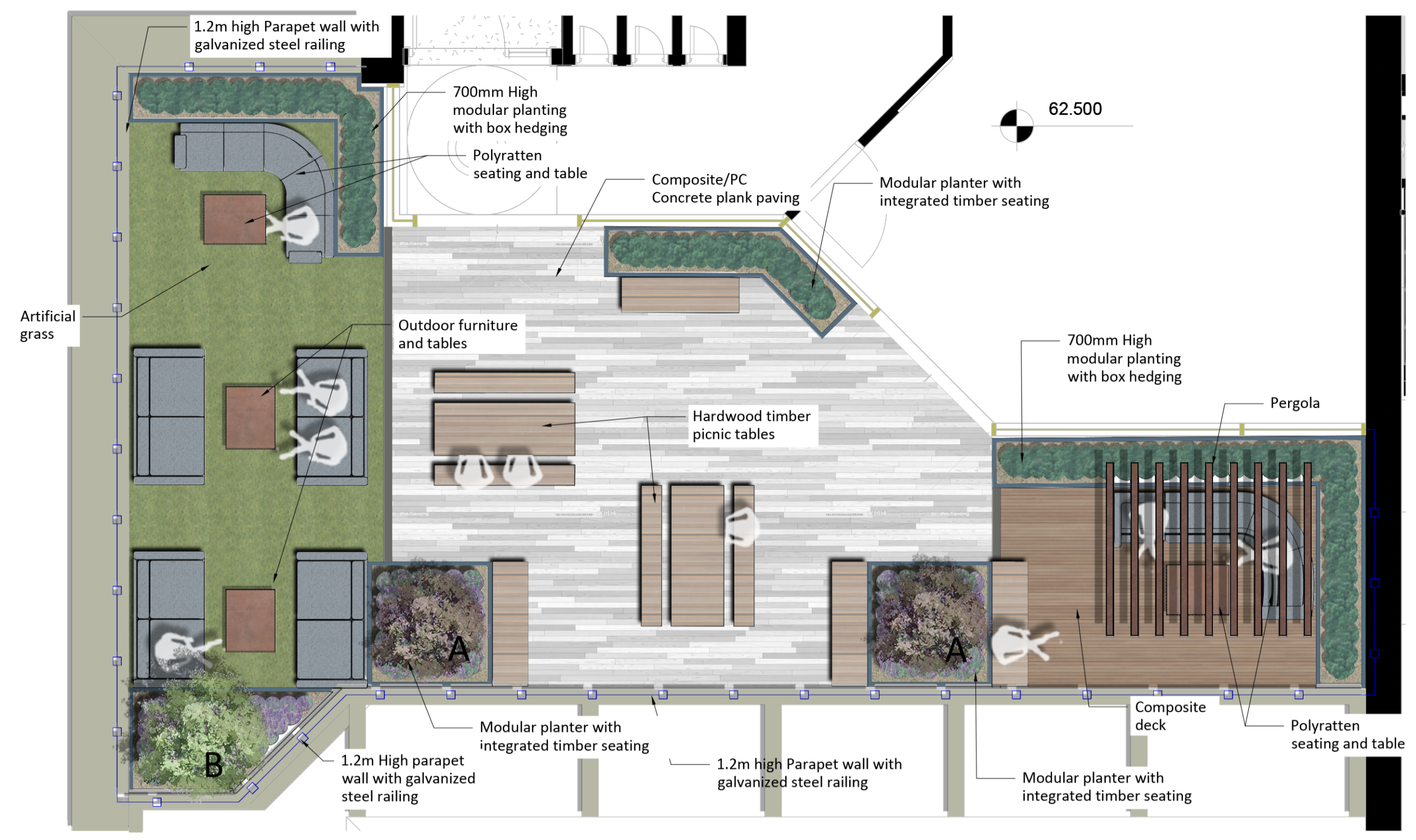
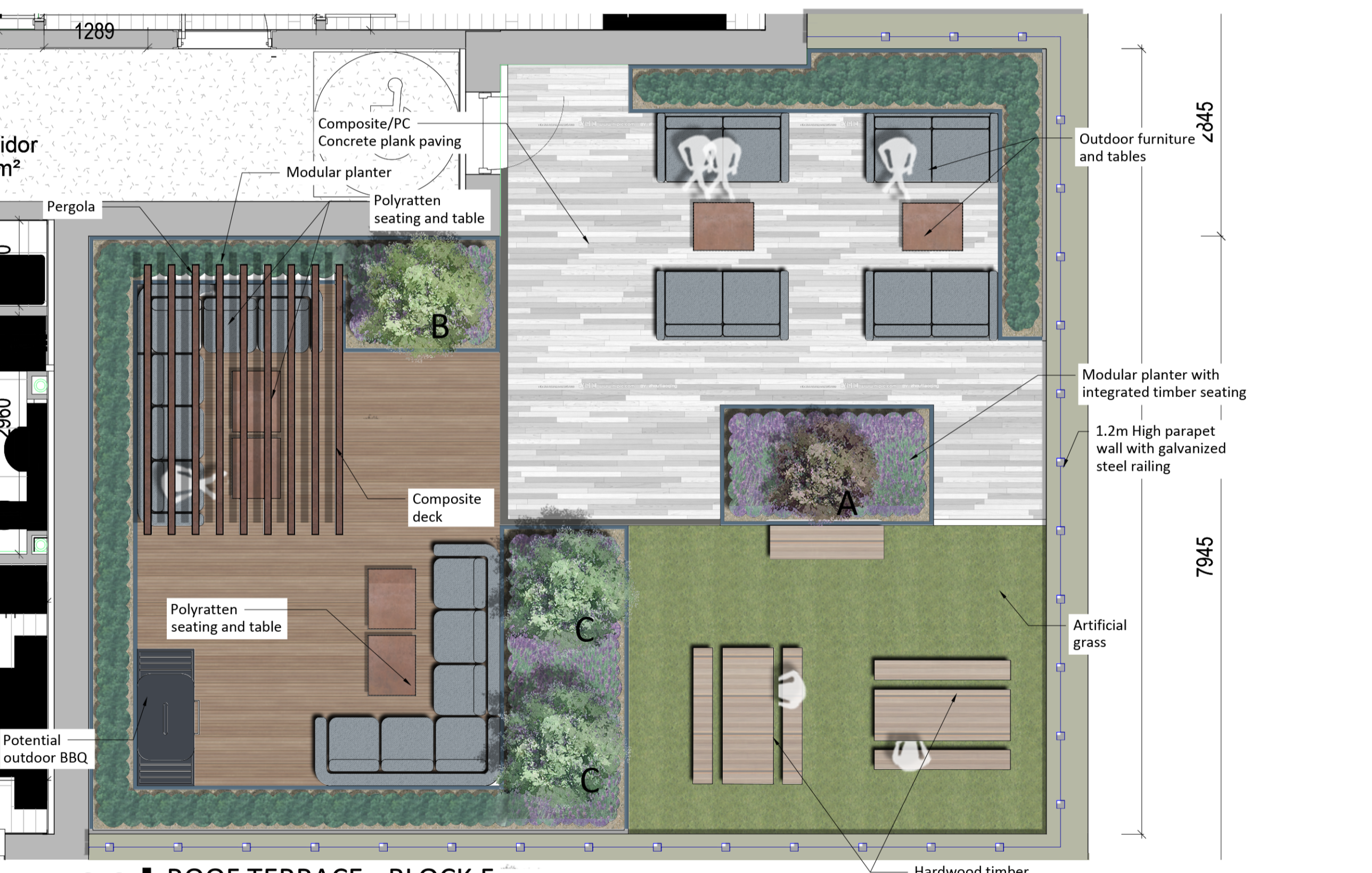


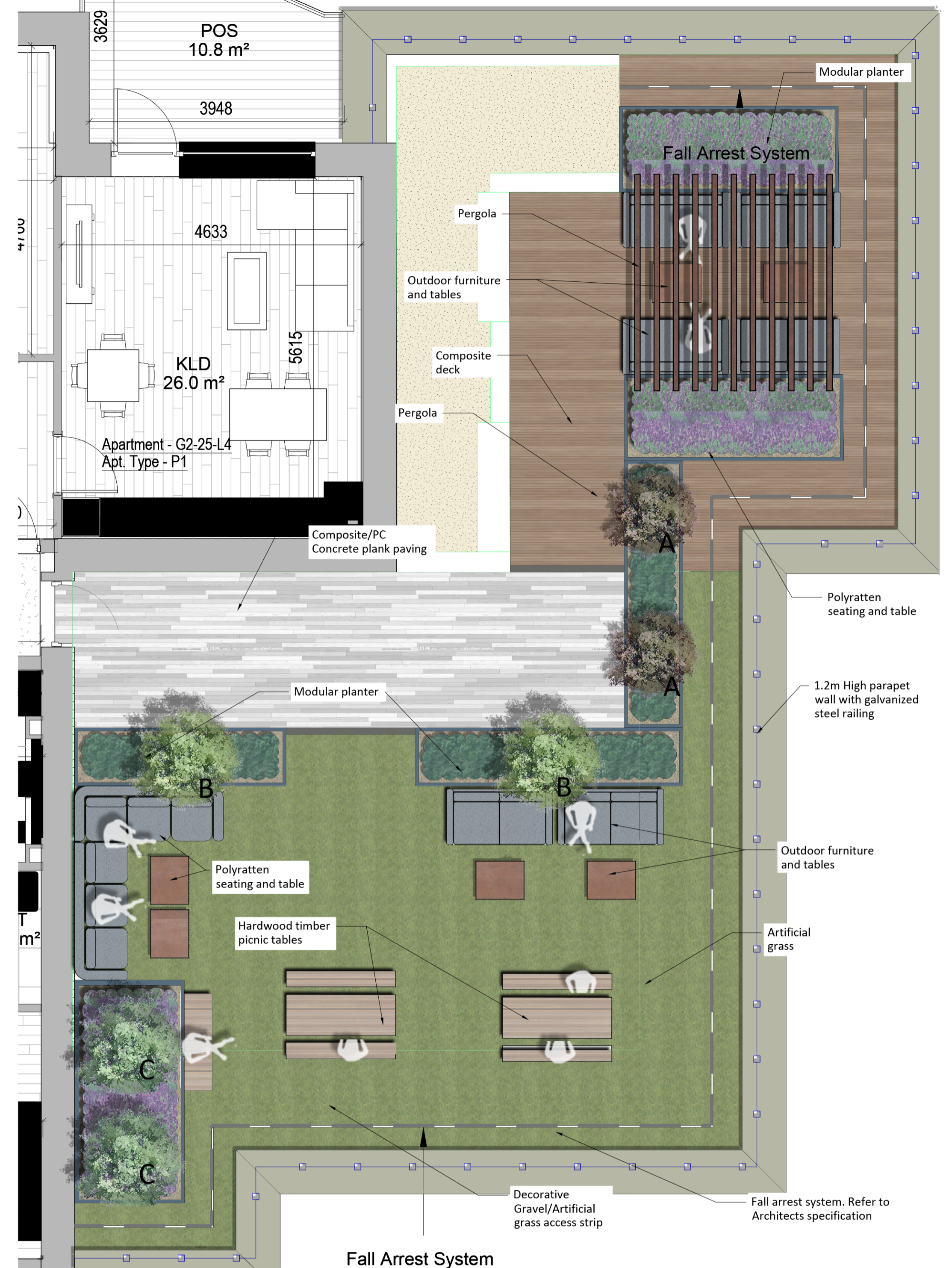
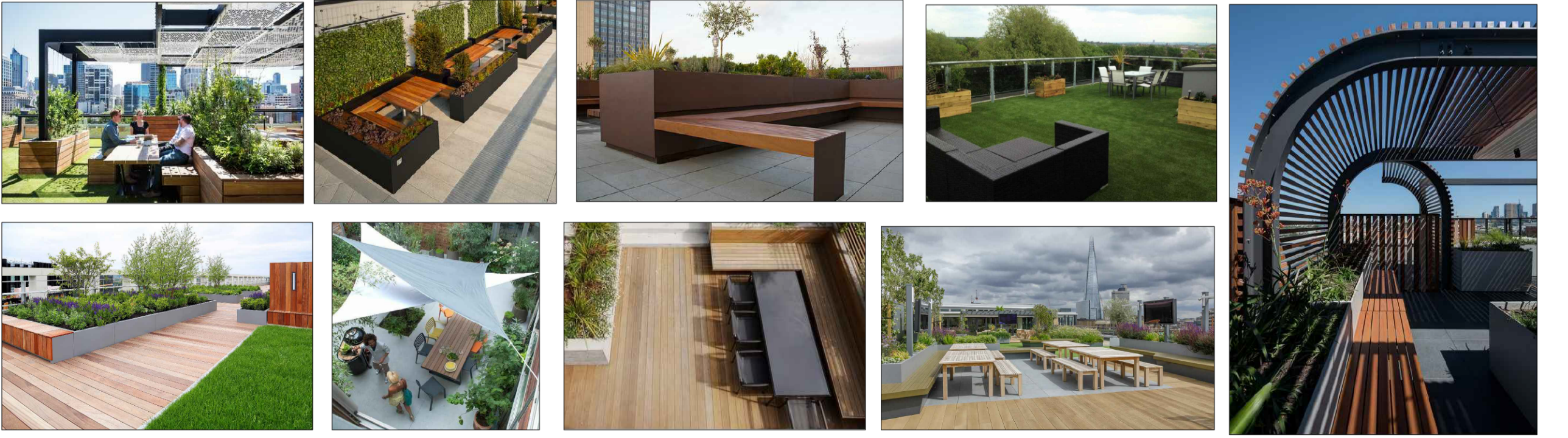
Copyright. All Rights Reserved. This work is copyright and cannot be reproduced or copied in any form or by any means (graphic, electronic or mechanical including photocopying) without the written permission of the originator. Any license, express or implied, to use this document for any purpose whatsoever is restricted to the terms of the agreement or implied agreement between the originator and the instructing party. Unless otherwise stated all dimensions are in millimeters. Where dimensions are not given, drawings must not be scaled and the matter must be referred to the Landscape Architect. If the drawing includes conflicting details/dimensions the matter must be referred to the Landscape Architect. All dimensions must be checked on site. The Landscape Architect must be informed by the contractor, of any discrepancies before work proceeds. THIS DRAWING IS TO BE READ IN CONJUNCTION WITH RELEVANT CONSULTANT'S DRAWINGS.



01 ROOF TERRACE - BLOCK A
Plan Scale 1:50



02 ROOF TERRACE - BLOCK F
Plan Scale 1:50



03 ROOF TERRACE - BLOCK G
Plan Scale 1:50

LANDSCAPE SPECIFICATIONS

Landscape works to be undertaken by an ALCI (Association of Landscape Contractors of Ireland) approved landscape contractor and in accordance with BS 4428:1989 Code of practice for general landscape operations (excluding hard surfaces).

Planting objectives:
To assist in visual screening of the proposed development site from surrounding road network and dwellings through retention of existing trees, new woodland belts and augmentation of existing hedgerows with additional native species planting. Planting species based on Pollinator Friendly Planting Code in the All-Ireland Pollinator Plan 2015-2020.

Existing Trees and boundary hedgerows are to be retained and protected in accordance with BS 5837:2012 Trees in relation to design, demolition and construction: Recommendations. Adequate protective fencing, as illustrated in Figs 2 & 3 of BS5837:2012, will be maintained between scaffolding and adjacent trees.

Ground Preparation

Prior to cultivation, planted areas shall be cleared of all loose debris, rubbish, stones over 25mm in diameter, roots, and other extraneous matter. Grass and weeds shall be sprayed with 'Glyphosate' or similar COSHH approved herbicide.

Topsoil preparation, quality, depths, cultivation and final grading shall be carried out in suitable weather conditions as per BS 3882:2007 Specification for topsoil and requirements for use. Overall minimum depths after firming and settlement to be:

Woodland / Shrub / Hedgerow areas 500 mm

Lawn and Grass areas 100mm

Proposed Standard Tree Planting

Trees supply and planting shall correspond to BS 8545 Trees: from nursery to independence in the

landscape - Recommendations. Planting of trees shall be undertaken in favourable weather conditions between October 31st to March 31st.

Tree pits shall be excavated to suitable dimensions to accommodate roots or root-balls or baskets with bases and sides broken up to a minimum depth of 150mm to assist drainage and root penetration. Any unsuitable material such as large clay lumps, bricks, concrete, timber and sand shall be removed off-site. All tree pits shall be backfilled, after planting, with a 3:1 volume mixture of topsoil and mulching compost/manure or similar approved.

The planted trees shall be full and well shaped with crowns thinned by 30% according to good horticultural practice and in a manner that does not affect the overall stature, structure or good appearance of the tree. All work shall conform to a minimum standard as set out in BS 4043:1989 Recommendations for transplanting root-balled trees.

Shrub and Groundcover Planting

Shrub plants to be planted at 2 to 3 plants per m² and groundcovers at 6 to 7 per m². Transplants and container grown shrubs shall be of the size stated and conform to BS 3936 - Part 1: Nursery stock specification for trees and shrubs.

Planting pockets 400x400x300mm deep with cultivated and evenly incorporated: organic manure 100mm layer over area of pit, fertiliser 35g. 75mm depth bark mulch dressing on completion of planting.

Maintenance

A Landscape Management & Maintenance Plan has been prepared to accompany this drawing that includes details on weeding, spot herbiciding, watering, planting management, control of insects/diseases and grass mowing.

Initial landscape operations will be undertaken by an ALCI member. The Contractor will be responsible for plant establishment and one year of establishment maintenance. The Landscape Architect will visit site at end of this year and produce a snagging list identifying all defects and outstanding items. Any trees or shrubs dying, damaged or removed will be replaced in the following planting season with plant of similar size and species.

LEGEND:

SOFTSCAPE: PROPOSED PLANTING

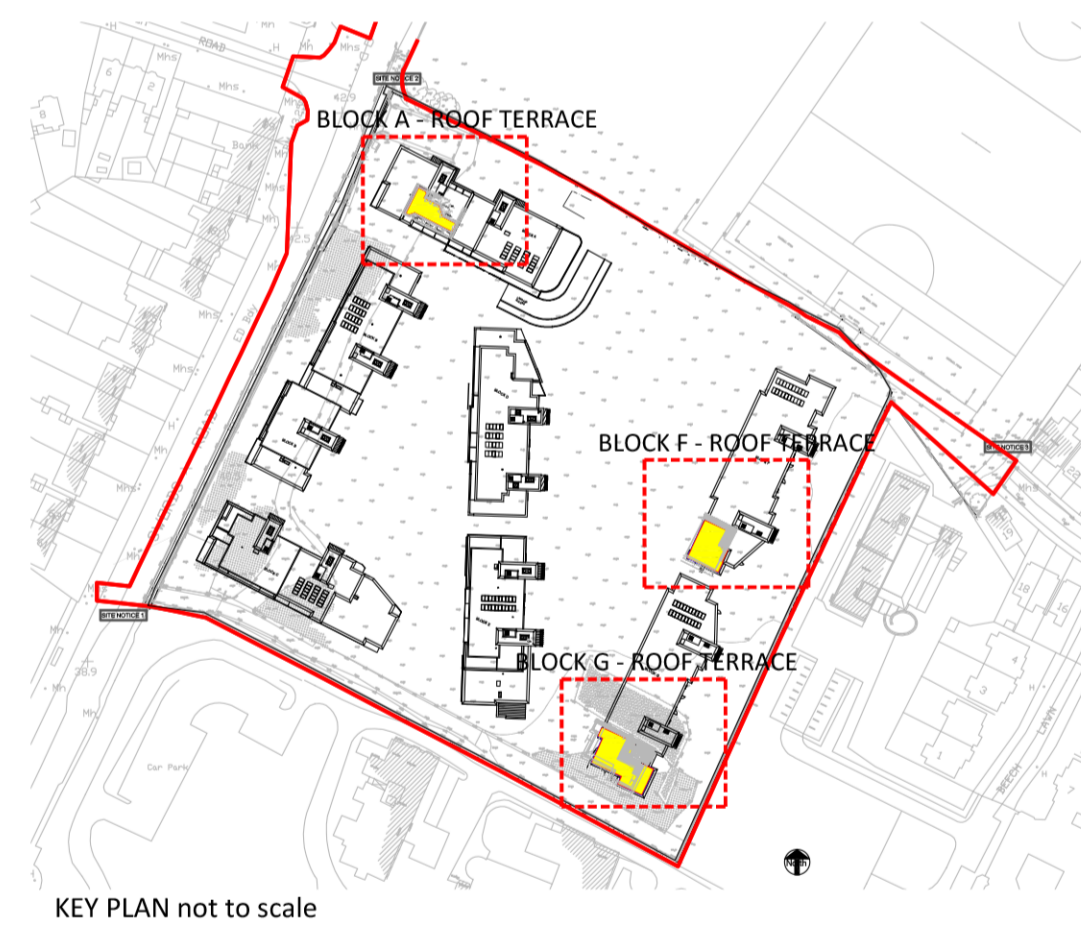
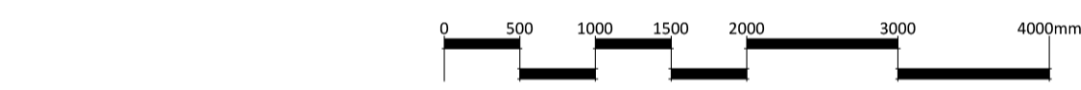
Small Trees				
Tree Tags	Species	Girth	Height	Spec
A	Acer spp.	16-18cm	2.5m	2xtr. (R/B)
B	Betula spp.	16-18cm	2.5m	2xtr. (R/B)
C	Corylus spp.	16-18cm	2.5m	2xtr. (R/B)

Roof Terrace - Planting Mix				
Species	Stock	Height	Spec	Density
Euonymus fortunei 'Emerald Gold'	CS	15-25cm	bushy	5/m²
Lavandula angustifolia 'Widcote'	CS	30-40cm	bushy	5/m²
Spiraea japonica 'Goldmound'	CS	30-40cm	bushy	4/m²
Hebe 'Green Globe'	CS	30-40cm	bushy	4/m²
Stipa arundinacea	CS	30-40cm	bushy	4/m²
Thymus vulgaris	CS	30-40cm	bushy	4/m²
Mentha spicata	CS	30-40cm	bushy	4/m²

Low Box Hedge Planting				
Species	Stock	Height	Spec	Density
Buxus sempervirens	RB	0.8m	double edged box	5/lin m

HARDSCAPE:

- Poly Rattan seating
- BBQ station
- PC Concrete paving planks
- Composite decking
- Artificial grass
- 1.2m High Parapet wall with galvanised steel railing
- 800mm High planter with low box hedging
- Modular planters
- Hardwood timber benches integrated with modular planters
- Hardwood timber picnic tables



PLANNING	Revision Notes	CT / AB	25/03/22	P01
By / Chk		Date	Rev	
Status: PLANNING				
Park Hood Chartered Landscape Architects				
Hawarden House, 163 Upper Newtownards Road, Belfast, BT4 3HZ T: +44 (0) 28 2029 8020 E: info@parkhood.com parkhood.com				
Client: Eastwise Construction Swords Limited				
Project: Hartfield Place Apartments Swords Road, Whitehall, Co.Dublin				
Title: Landscape Proposals - Roof terraces				
Job No: 7335	Scale@A1	1:50	Date: March 22	
Drawing Number				
7335-L-2010				
				Revision P01